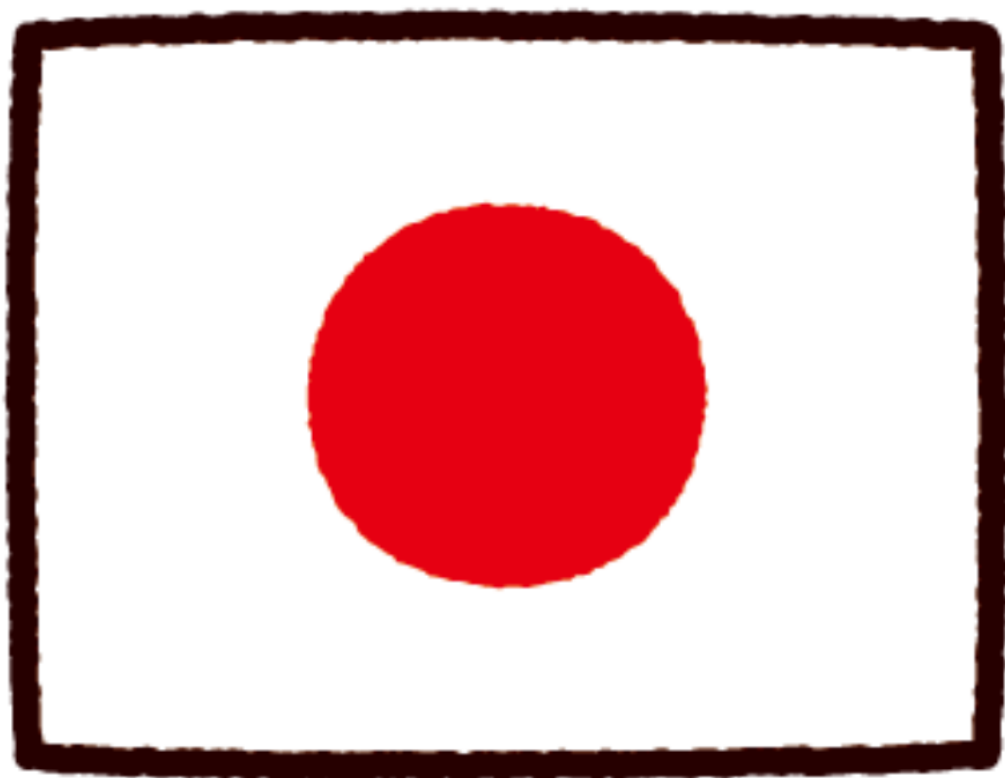


Festive Japan



New Year

It's January.

What do we do in January?

We eat New Year's food.

Osechi is a traditional Japanese meal in a special box we enjoy in the beginning of January.



Setsubun

It's February.

What do we do in February?

We eat beans.

In Japan, there is a culture called Setsubun, in which people scatter beans to scatter bad luck. For good luck, we eat as many beans as our age plus 1.



Hinamatsuri

It's March.

What do we do in March?

This is the Girls' Festival to celebrate their growth.

During the Girls' Festival, we display Japanese traditional dolls.



Hanami

It's April.

What do we do in April?

We eat and drink while watching the cherry blossoms.

In Japan, there is a traditional event called hanami, where people enjoy eating and drinking while watching the cherry blossoms with family and friends.



Children's Day

It's May.

What do we do in May?

We raise our Koinobori decorations.

Koi are strong fish. An old story says the strongest one becomes a dragon!



Rainy Days

It's June.

What do we do in June?

We have a lot of rain in this season.

We enjoy the rain with an unbrella.



Tanabata

It's July.

What do we do in July?

We write our wishes on bamboo leaves.

This event called "Tanabata".



Summer Festival

It's August.

What do we do in August?

We go to summer festivals.

We wear "Yukata". They are casual clothes for the summer season.



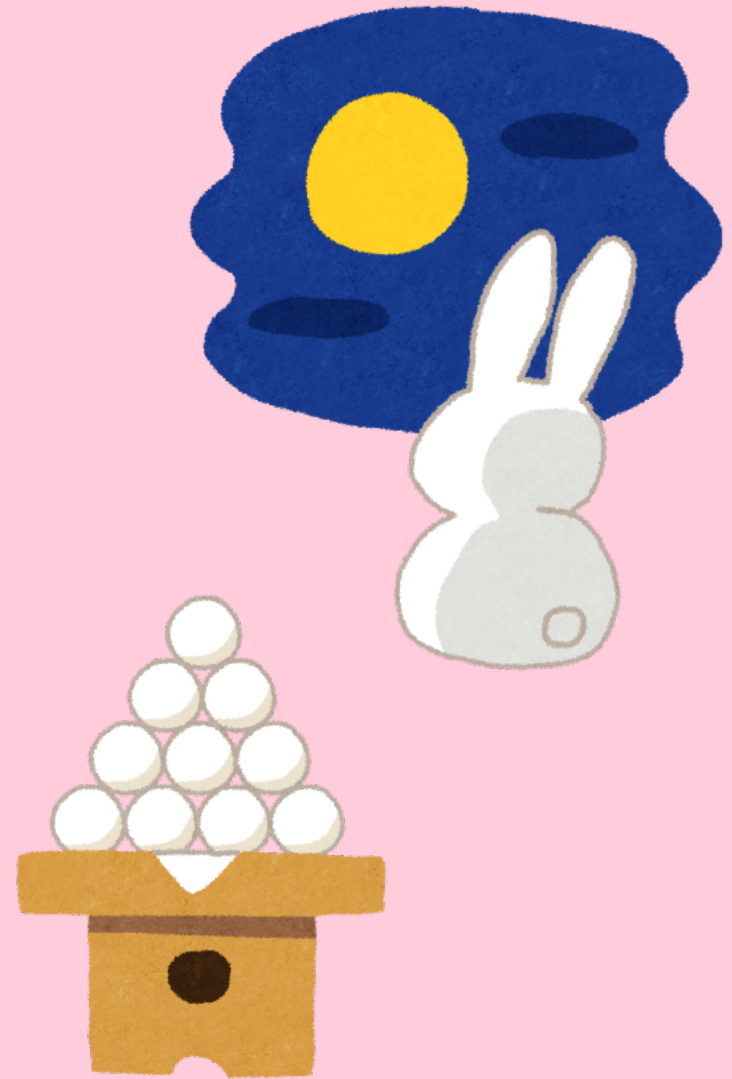
Otsukimi

It's September.

What do we do in September?

We enjoy a moon-viewing event called "Jugoya".

The purpose of this event is to hope a good harvest.



Inekari

It's October.

What do we do in October?

We harvest rice.

The newly harvested rice is called "Shin-Mai".

Shin-Mai is very good.



Shichigosan

It's November.

What do we do in November?

We celebrate the growth of our children.

This event is called “Shichigosan”.

七五三 means age 7, 5 and 3.



Omisoka

It's December.

What do we do in December?

We eat Toshikosi-soba on the last night of New Year's Eve.

Toshikoshi means "entering the new year." Soba are buckwheat noodles.



